

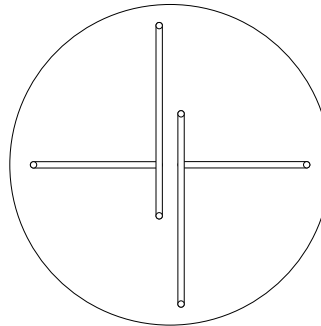
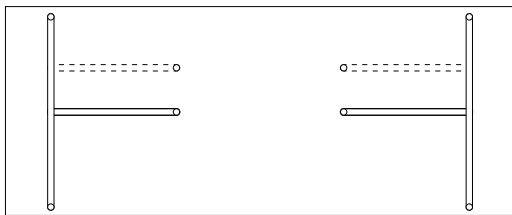
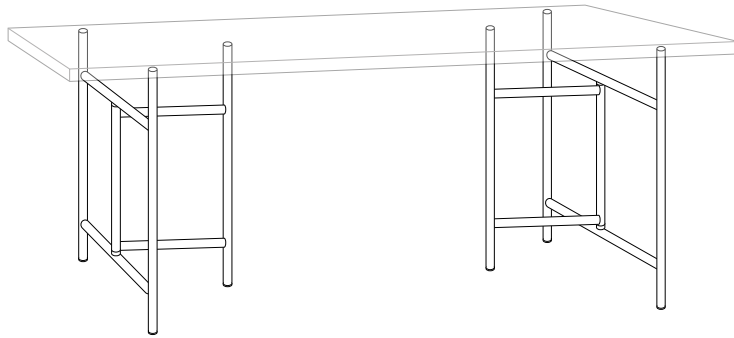
Eiermann 3

Trestle

Design: Alexander Seifried, 2015

depth lateral supports: 580/780 mm
 length stretcher: 290/390/780 mm
 height trestle incl. tabletop 30mm: 690/720 mm
 height incl. level adjustment and tabletop: 740 - 760 mm

stainless steel (RAL colours)
 black 9005, white 9010, chrome plated or stainless steel



can be positioned centrally or off-centre

We recommend:

tabletops 600 to 800 mm wide and 1000 to 1600 mm long with trestle 580 x 290 mm
 tabletops 900 mm and wider, and 1600 to 2400 long with trestle 780 x 390 mm
 large tabletops up to 4000 mm long with trestle 780 x 780 mm
 circular tabletops ø 700 to 1000 mm with trestle 580 x 290 mm; ø 1000 to 1500 mm with trestle 780 x 390 mm

Prices for 1 set of trestles

including rubber caps and levelling screw

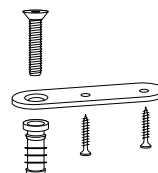
side frame depth	stretcher length		
	290 mm	390 mm	780 mm
580/780 mm			
black or white	x	x	x
chrome plated	x	x	x
stainless steel		x	

tabletop ø 1000 mm

MDF 25 mm, melamine white or black	x
solid oak 40 mm, natural or black, satin open-pore lacquer	x

Accessories

leveling feet, set of 6	x
leveling feet, stainless steel, set of 6	x



mounting bracket, stainless steel, set of 4
 x