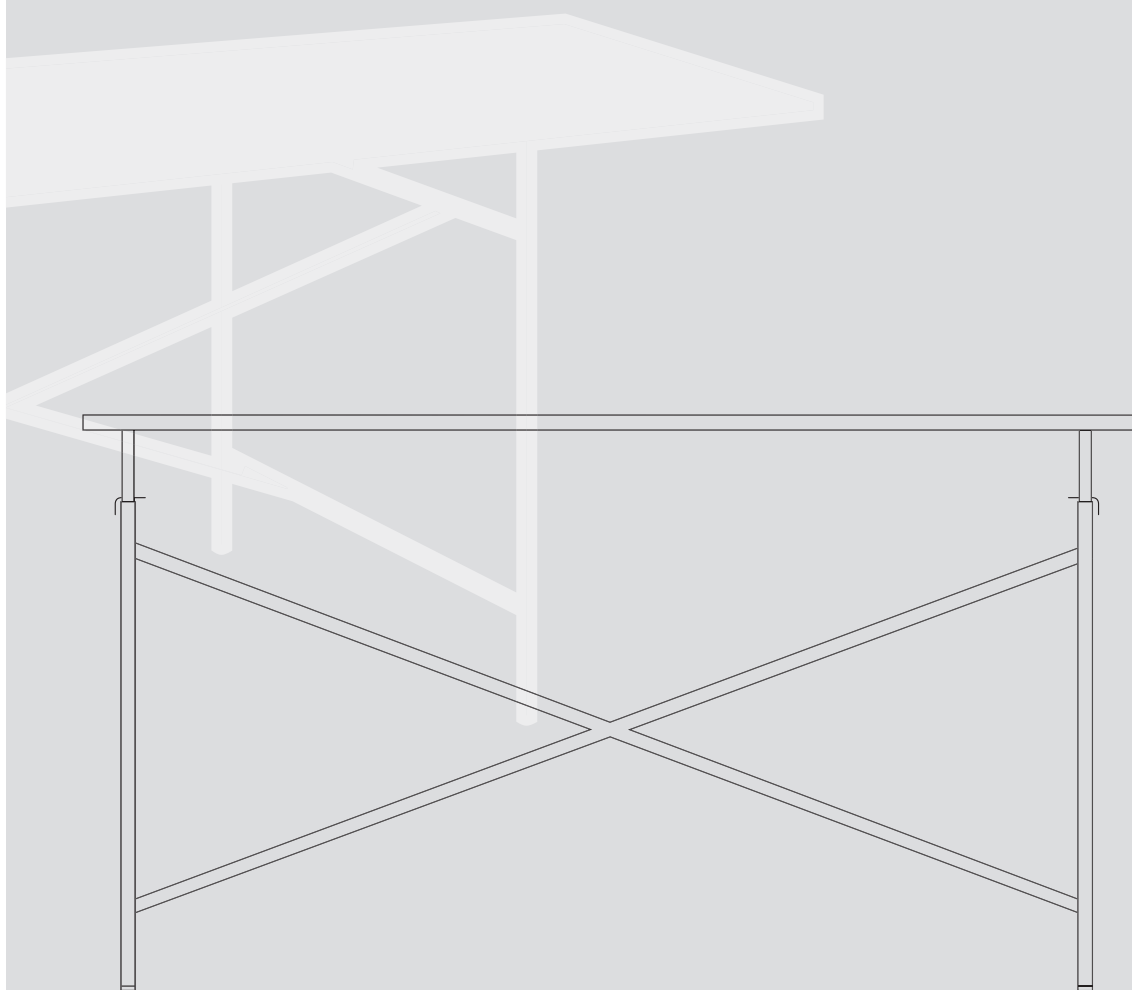


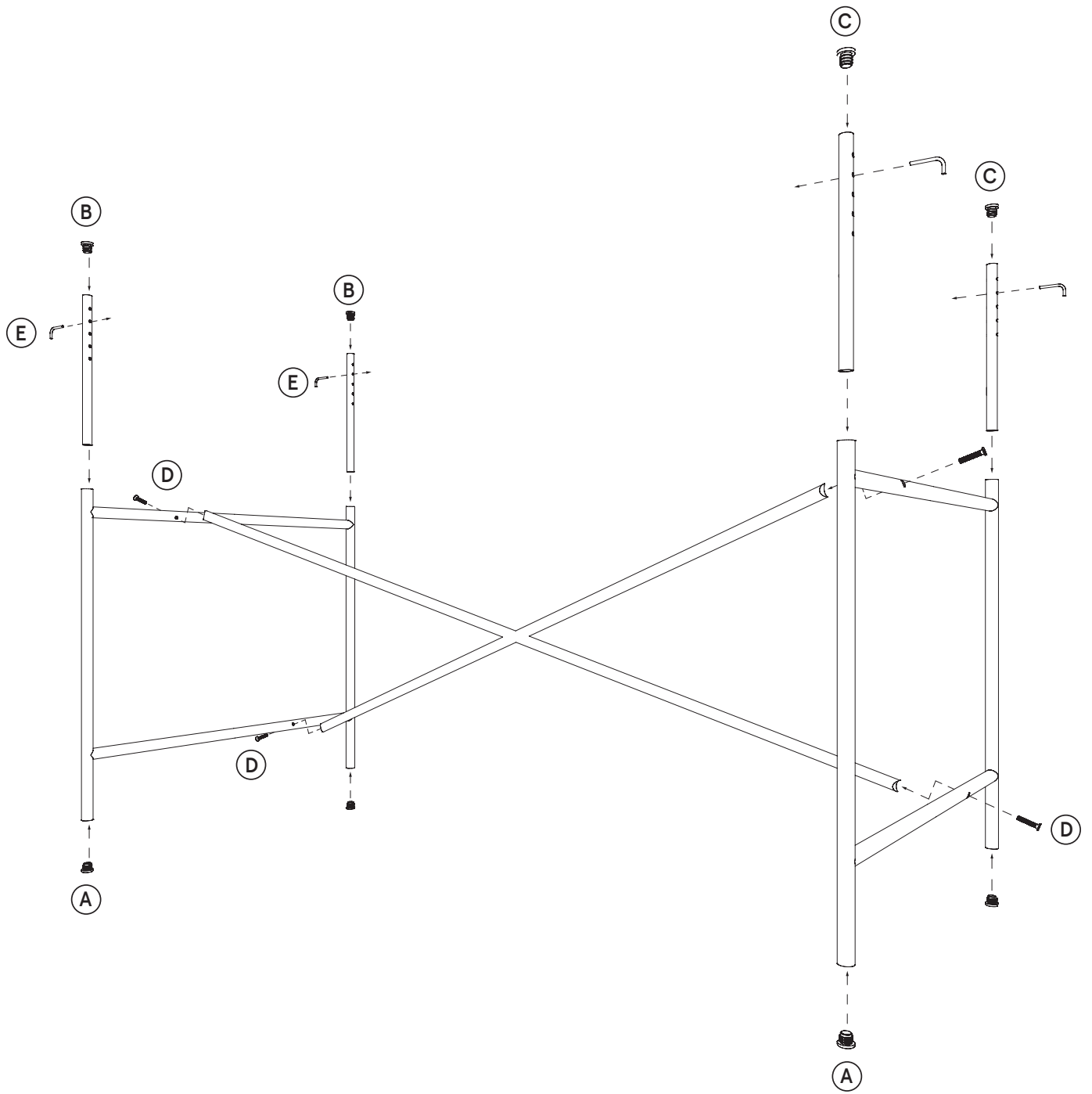
Table Frame

EIERMANN 1

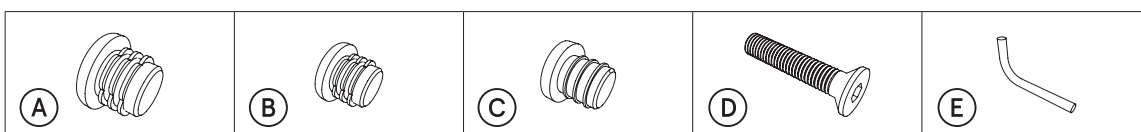


Assembly instruction

RICHARD LAMPERT



All right?



4 pc. Threaded stoppers, dia. 20 mm for lower table frame

4 pc. Threaded stoppers, dia. 16 mm for upper table frame ext

4 pc. Rubber stoppers for upper table frame extensions (additional)

4 pc. Allen bolts M6 x 30 mm

4 pc. Adjustment keys

Ready, set, go ...

1. Push the four threaded stoppers (A) into the longer ends of the left and right leg frames. Have two Allen key bolts (D), one of the leg frames and the table cross-brace to hand.
2. Attention: when unscrewing the Allen bolts from the cross-brace, be aware of the unusual angle in the next step. Do not use an Allen key to screw the bolt into the first thread hole, otherwise you risk damaging the threads. Please be aware of the angle at which the bolt is screwed in!
Tip: if you have a little grease to hand, put some on the end of the bolt.
3. Using your left hand, hold the cross-brace and the leg frame together, so that the cross-brace comfortably engages on the top and bottom horizontal of the leg frame and so that the other end of the cross-brace is just touching the floor.
ATTENTION: Place a piece of cardboard from the packaging under the cross-brace where it touches the floor, to avoid any scratches.
4. Now, by hand, screw in the Allen bolt (D) three or four turns into the thread.
5. Take the other leg frame and repeat step 5.
Use an Allen key to gently tighten all four bolts in their threads.
6. Place the table frame in the desired position.
7. Take the extension tubes and push the threaded stoppers (B) in.
Alternatively, use the rubber stopper (C) set (must be purchased separately), using a little lubricant (e.g. washing up liquid) to ease it into the tube.
8. Check the fit of the extension tubes in leg frames: If the extension has a bit too much "play" and rattles in the side frame, you can reduce the thickness by wrapping sellotape around them.
9. Now, determine the height of the table top. Place the adjustment keys (E) in the pre-drilled holes in the extension tubes. In the top hole, the table top will have a height of 725 mm. The table top can be adjusted in 35 mm increments.
Now place the extension tubes, with the adjustment keys in place, into the leg frames.
ATTENTION: only use up to the third hole on the extension tubes, otherwise the table will become unstable.

10. Place the table top on the frame and check whether the leg frames are square. The frame can be squared manually by carefully pulling the leg frames apart or pushing them together.
11. Finally, tighten up all four Allen bolts ④.

Please note:

After tightening the bolts, the table frame may not necessarily be totally straight. Follow these instructions to adjust it: First, loosen the bolts by two turns. When the table frame is perfectly straight, you can re-tighten the bolts.

Accessories for your comfort

The complete accessories can be found on our on our website. For example: If the floor is too uneven, please use the levelling set or use our fixing kit to fix the table top or place it at an angle.

Questions left?

+49 (0)711 860 20 70 | mail@richard-lampert.de