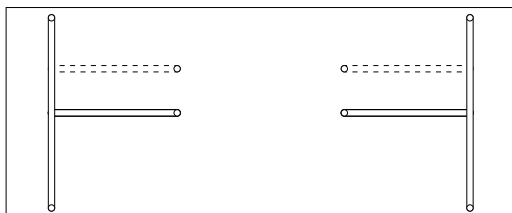
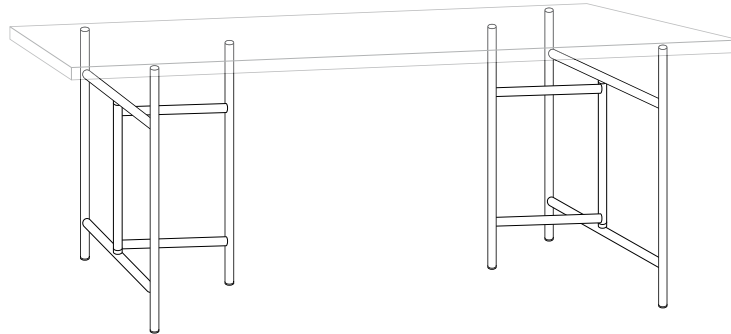


Eiermann 3 Outdoor Trestle

Design: Alexander Seifried, 2015

depth lateral supports:	580/780 mm
length stretcher:	390
height trestle/incl. tabletop 30 mm:	690/720 mm
height incl. levelling feet and tabletop:	733 - 753 mm

stainless steel V4A frame or hot-dip galvanized



centrally or off-centre

Prices for 1 set of trestles
including rubber caps and levelling screw
frame depth 580/780 mm, stretcher length 390 mm

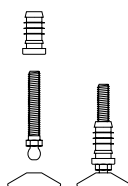
hot-dip galvanized	x
V4A stainless steel	x

tabletop	width x depth	
5 layer plywood solid spruce/fir		
weather-resistant glue	1600 x 830 mm	x
(AW 100), oiled	2000 x 900 mm	x

Accessories

levelling feet, stainless steel,
set of 6

x



mounting bracket, stainless steel,
set of 4

x

